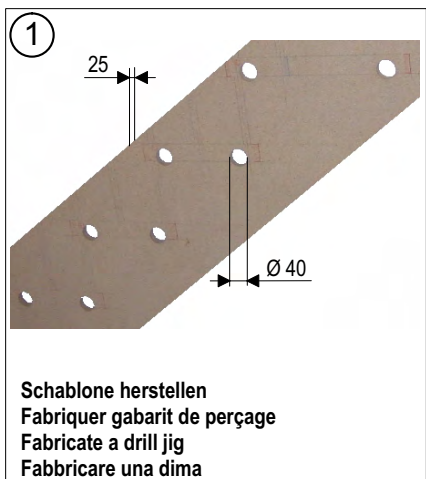


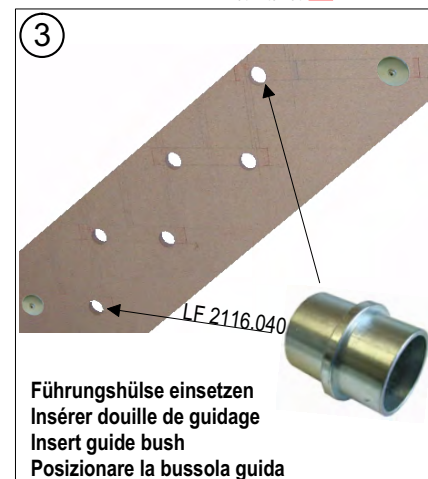
Montageanleitung für seitliche Stufenbefestigungen
Instruction de montage pour fixations latérales de marches
Mounting instruction for lateral step fixings
Instruzioni per il montaggio, fissaggio laterale dei gradini



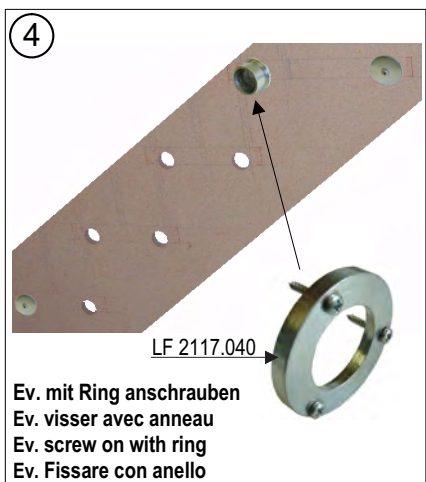
①
 Schablone herstellen
 Fabriquer gabarit de perçage
 Fabricate a drill jig
 Fabbricare una dima



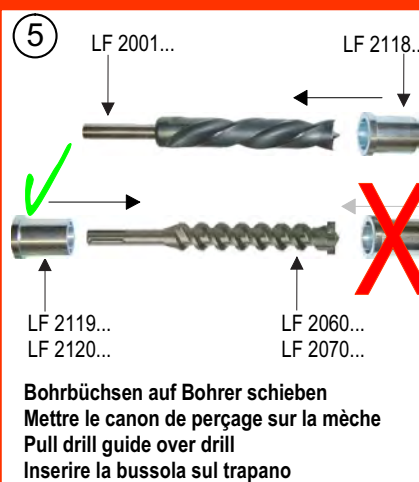
②
 Schablone anschrauben
 Visser gabarit de perçage
 Screw on drill jig
 Fissare la dima



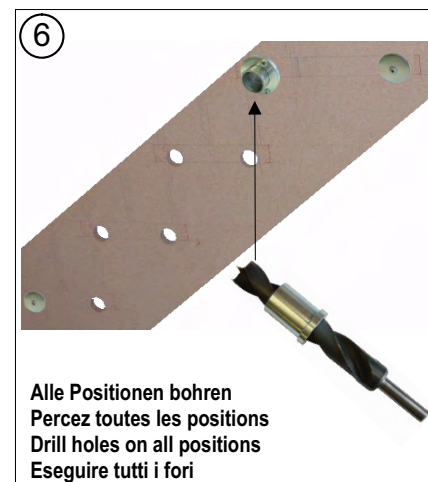
③
 Führungshülse einsetzen
 Insérer douille de guidage
 Insert guide bush
 Posizionare la bussola guida



④
 Ev. mit Ring anschrauben
 Ev. visser avec anneau
 Ev. screw on with ring
 Ev. Fissare con anello

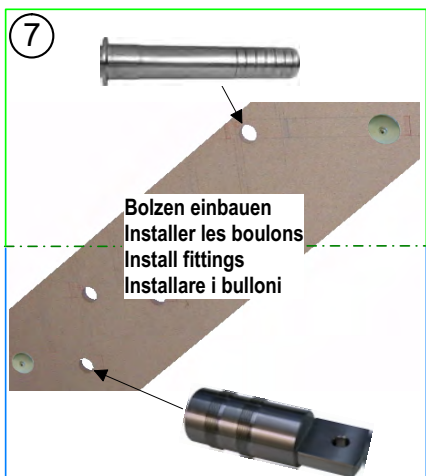


⑤
 Bohrbüchsen auf Bohrer schieben
 Mettre le canon de perçage sur la mèche
 Pull drill guide over drill
 Inserire la bussola sul trapano



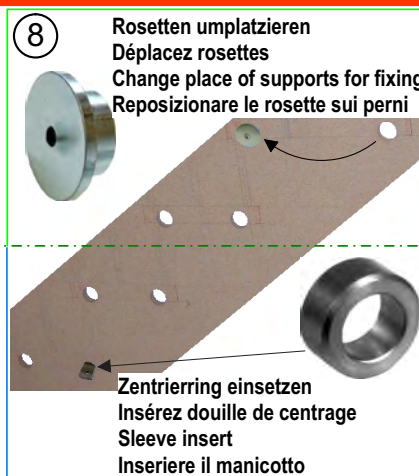
⑥
 Alle Positionen bohren
 Percez toutes les positions
 Drill holes on all positions
 Eseguire tutti i fori

Set Nr:
5 / 7 / 8 / 9



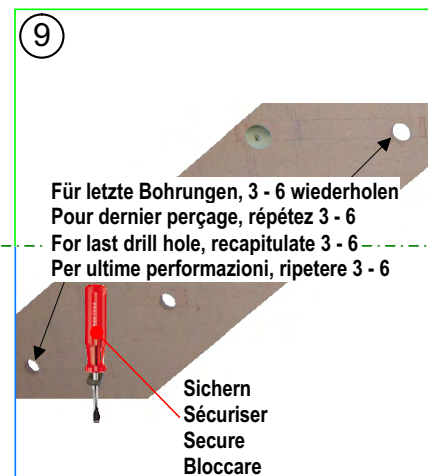
⑦
 Bolzen einbauen
 Installer les boulons
 Install fittings
 Installare i bulloni

Set Nr:
1 / 2 / 3624



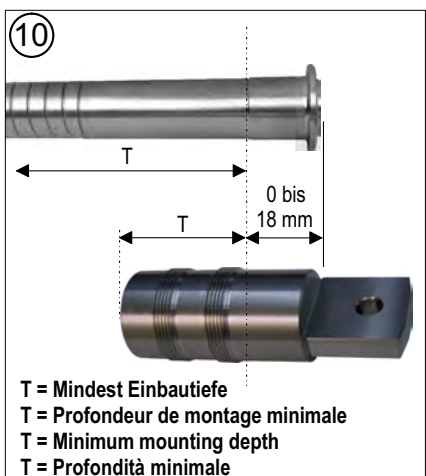
⑧
 Rosetten umplatzieren
 Déplacez rosettes
 Change place of supports for fixing
 Re posizionare le rosette sui perni

Zentrierung einbauen
 Insérez douille de centrage
 Sleeve insert
 Inserire il manicotto

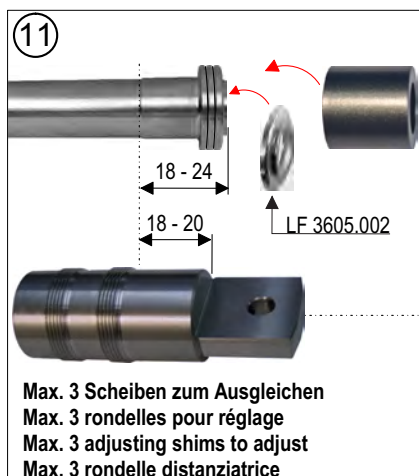


⑨
 Für letzte Bohrungen, 3 - 6 wiederholen
 Pour dernier perçage, répétez 3 - 6
 For last drill hole, recapitulate 3 - 6
 Per ultime perforazioni, ripetere 3 - 6

Sichern
 Sécuriser
 Secure
 Bloccare



⑩
 T = Mindest Einbautiefe
 T = Profondeur de montage minimale
 T = Minimum mounting depth
 T = Profondità minimale



⑪
 Max. 3 Scheiben zum Ausgleichen
 Max. 3 rondelles pour réglage
 Max. 3 adjusting shims to adjust
 Max. 3 rondelle distanziatrice



⑫
 Hülsen, Rosetten + Verbinder montieren
 Couvrir avec rondelles + élém. d'assemblage
 Mount cover, rosettes + fixing element
 Inserire la rosette sui legami avvitare i perni

Montageanleitung: Einbau mit Schallschutz
Instruction de montage: Montage avec isolation acoustique
Mounting instruction: Mounting with noise protection
Instruzioni per montaggio: Fissaggio con capsula antirumore

